

JEFFREY ALEXANDER

Kitchen Islands by Hardware Resources

Add a Beautiful Island to your Kitchen

Complete your kitchen with a furniture-grade island – solid wood construction, ample storage and counter space, carved wood details, and a beautiful finish, all for a great price.

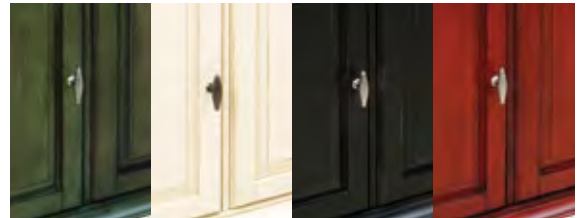
Installs easily in an existing kitchen

Multiple sizes of islands to choose from. Complements existing kitchen cabinets. No wiring or plumbing required; place island directly on existing flooring or carpet. No wiring or plumbing required.



Rich finishes

Multi-layer hand finishing process. Colors designed to coordinate and contrast with popular kitchen cabinet finishes.



Food-grade butcher block top

Edge grain tops made in the USA using FDA approved food-safe materials providing a safe work surface for food preparation.



Options for tops

Butcher block tops are available for all islands. Islands can be purchased without tops, so that a custom granite or marble top can be added.

Solid furniture-style construction

High quality wood materials and furniture-style construction. All materials used in Jeffrey Alexander islands meet the strict CARB2 certifications.



Full extension slides

Full extension slides bring the drawer all the way out. Soft-close motion quietly self-closes the drawers on most models. Hidden undermount slides provide a clean look to drawers.

Dovetail drawer boxes

1/2" thick solid hardwood material and dovetail joints make a box strong enough to hold anything from dish towels to small kitchen appliances. Drawer box and slides have a 100lb dynamic load rating.

Increased storage

Deep drawers and tall cabinets designed to house all types of kitchen accessories and cookware. Greatly increase your counter top workspace and storage in an elegant furniture piece.

Hardware from our Jeffrey Alexander Collection

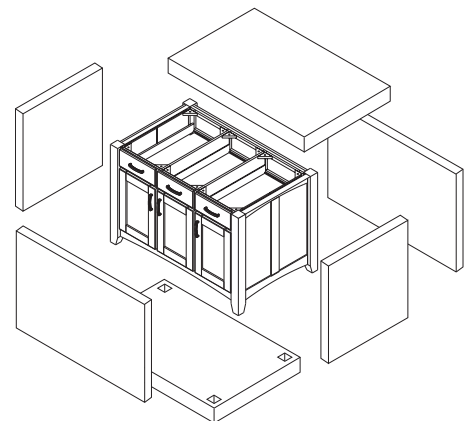
For a unified look, upgrade the kitchen cabinets using the same pulls and knobs as the island.

Upgraded packaging

Extra padding helps protect against damage in shipment.

Limited Lifetime Warranty

Lifetime warranty for defects in materials and craftsmanship for the original purchaser.



NEW



Kitchen islands



ISL09-AGB



ISL09-FWH

Bungalow Island

- » Table style island manufactured using the highest quality furniture grade hardwoods and MDF wood.
- » The island features two working drawers on one side and two false drawers on the reverse side.
- » The drawers are dovetailed solid hardwood and are mounted on full extension soft-close undermount slides.
- » The included decorative hardware can be found in the Jeffrey Alexander Cairo collection (item # 595-128). Coordinating posts are available from Hardware Resources (item # P34).
- » 1-3/4" hard maple edge grain butcher block top sold separately (ISL03-TOP). Made in the USA with FDA approved food-safe glues and finishing materials. Sealed with a proprietary blend of all-natural products designed to keep your island top looking ageless. Installation required for top.
- » Assembly required for posts and bottom shelf. Assembly instructions and hardware included. Can also be assembled without shelf.

Technical Specifications

- » Drawer pull measurement: 128mm (5.04") center-to-center
- » Drawer slides: 21" full extension soft-close undermount slides
- » Dimensional drawings on page 588 and available at www.hardwareresources.com



reverse side



assembled
without shelf

ISL09-AGB Aged Black
ISL09-FWH French White
45-15/16" x 28-1/16" x 34-1/4" (without top)
48" x 30" x 36" (including top)

ISL03-TOP (top sold separately)
48" x 30" x 1-3/4"
Hard maple
Edge grain butcher block top
Food-safe glues and finishing materials

NEW



Kitchen islands



ISL10-AGB



ISL10-FWH

Bungalow Petite Island

- » Table style island manufactured using the highest quality furniture grade hardwoods and MDF wood.
- » The island features two working drawers on one side and two false drawers on the reverse side.
- » The drawers are dovetailed solid hardwood and are mounted on full extension soft-close undermount slides.
- » The included decorative hardware can be found in the Jeffrey Alexander Cairo collection (item # 595-96). Coordinating posts are available from Hardware Resources (item # P34).
- » 1-3/4" hard maple edge grain butcher block top sold separately (ISL10-TOP). Made in the USA with FDA approved food-safe glues and finishing materials. Sealed with a proprietary blend of all-natural products designed to keep your island top looking ageless. Installation required for top.
- » Assembly required for posts and bottom shelf. Assembly instructions and hardware included. Can also be assembled without shelf.

Technical Specifications

- » Drawer pull measurement: 96mm (3.78") center-to-center
- » Drawer slides: 18" full extension soft-close undermount slides
- » Dimensional drawings on page 588 and available at www.hardwareresources.com



reverse side



assembled without shelf

ISL10-AGB Aged Black
ISL10-FWH French White
33-15/16" x 22-1/16" x 34-1/4" (without top)
36" x 24" x 36" (including top)

ISL10-TOP (top sold separately)
36" x 24" x 1-3/4"
Hard maple
Edge grain butcher block top
Food-safe glues and finishing materials

NEW



Kitchen islands



ISL12-AGB



ISL12-FWH

- » Cabinet style island manufactured using the highest quality furniture grade hardwoods and MDF wood.
- » The island features two working drawers and an open cabinet with adjustable shelf on one side and a decorative panel on the reverse side. Fully adjustable shelves on both ends.
- » The drawers are dovetailed solid hardwood and are mounted on full extension soft-close undermount slides. Cabinet features integrated soft-close hinges.
- » The included decorative hardware can be found in the Jeffrey Alexander Sonoma collection (item # 431).
- » 1-3/4" hard maple edge grain butcher block top sold separately (ISL10-TOP). Made in the USA with FDA approved food-safe glues and finishing materials. Sealed with a proprietary blend of all-natural products designed to keep your island top looking ageless. Installation required for top.



reverse side



Technical Specifications

- » Drawer slides: 18" full extension soft-close undermount slides
- » Dimensional drawings on page 588 and available at www.hardwareresources.com

ISL12-AGB Aged Black
ISL12-FWH French White
34" x 22" x 34-1/4" (without top)
36" x 24" x 36" (including top)

ISL10-TOP (top sold separately)
36" x 24" x 1-3/4"
Hard maple
Edge grain butcher block top
Food-safe glues and finishing materials



Kitchen islands



ISL01-AQU



ISL01-AWH



ISL01-DBK



ISL01-RED

- » Cabinet style island manufactured using the highest quality furniture grade hardwoods and MDF wood.
- » The island features fully adjustable display shelves on one side and three working drawers and cabinets on reverse. Cabinets have one adjustable shelf.
- » The drawers are dovetailed solid hardwood and are mounted on full extension ball bearing slides.
- » The included decorative hardware can be found in the Jeffrey Alexander Glenmore collection (item # 618, 718). Coordinating posts are available from Hardware Resources (item # P13).
- » 1-3/4" hard maple edge grain butcher block top sold separately (ISL01-TOP). Made in the USA with FDA approved food-safe glues and finishing materials. Installation required for top. Sealed with a proprietary blend of all-natural products designed to keep your island top looking ageless. Installation required for top.



reverse side



Technical Specifications

- » Drawer pull measurement: 128mm (5.04") center-to-center
- » Drawer slides: 16" full extension ball bearing slides
- » Dimensional drawings on page 589 and available at www.hardwareresources.com

ISL01-AQU Aqua Green
ISL01-AWH Antique White
ISL01-DBK Distressed Black
ISL01-RED Brilliant Red
52-5/8" x 32-3/8" x 35-1/4" (without top)
54" x 34" x 37" (including top)

ISL01-TOP (top sold separately)
54" x 34" x 1-3/4"
Hard maple
Edge grain butcher block top
Food-safe glues and finishing materials



Kitchen islands



ISL02-AWH



ISL02-DBK

Entertaining Island

- » Cabinet style island manufactured using the highest quality furniture grade hardwoods and MDF wood.
- » The island features fixed shelves with three removable wine racks on one side, four working drawers and cabinet with adjustable shelf on the reverse side, and fully adjustable shelves on both ends. Additional wine racks sold separately.
- » The drawers are dovetailed solid hardwood and are mounted on full extension soft-close undermount slides.
- » The included decorative hardware can be found in the Jeffrey Alexander Lyon collection (item # 3991). Coordinating posts are available from Hardware Resources (item # P6).
- » 1-3/4" hard maple edge grain butcher block top sold separately (ISL01-TOP). Made in the USA with FDA approved food-safe glues and finishing materials. Sealed with a proprietary blend of all-natural products designed to keep your island top looking ageless. Installation required for top.



reverse side



Standard unit with wine racks removed

Technical Specifications

- » Drawer slides: 12" full extension soft-close undermount slides
- » Wine racks are fully removable
- » Additional wine racks sold separately (ISL02-AWH-WR and ISL02-DBK-WR)
- » Dimensional drawings on page 589 and available at www.hardwareresources.com

ISL02-AWH Antique White
ISL02-DBK Distressed Black
52-1/2" x 32-5/16" x 34-1/4" (without top)
54" x 34" x 36" (including top)

ISL01-TOP (top sold separately)
54" x 34" x 1-3/4"
Hard maple
Edge grain butcher block top
Food-safe glues and finishing materials



Kitchen islands



ISL07-BLK

Contemporary Island

- » Cabinet style island manufactured using the highest quality furniture grade hardwoods and MDF wood.
- » The island features three working drawers and cabinet storage on both sides and fully adjustable open shelves on one side. Cabinet doors feature modern textured clear glass inserts.
- » The drawers are dovetailed solid hardwood and are mounted on full extension soft-close undermount slides.
- » The included decorative hardware can be found in the Jeffrey Alexander Delgado collection (item # 519-128).
- » 1-3/4" hard maple edge grain butcher block top sold separately (ISL01-TOP). Made in the USA with FDA approved food-safe glues and finishing materials. Sealed with a proprietary blend of all-natural products designed to keep your island top looking ageless. Installation required for top.

Technical Specifications

- » Drawer and cabinet pull measurement: 128mm (5.04") center-to-center
- » Drawer slides: 12" and 15" full extension soft-close undermount slides
- » Glass inserts are replaceable
- » Dimensional drawings on page 589 and available at www.hardwareresources.com



reverse side



ISL07-BLK Black
52-1/2" x 32-1/2" x 35-1/2" (without top)
54" x 34" x 37-1/4" (including top)

ISL01-TOP (top sold separately)
54" x 34" x 1-3/4"
Hard maple
Edge grain butcher block top
Food-safe glues and finishing materials



ISL06-AWH



ISL06-DBK

Kitchen islands

Acanthus Island

- » Cabinet style island manufactured using the highest quality furniture grade hardwoods and MDF wood.
- » The island features three false drawers above cabinet storage and a removable wine rack on one side and three working drawers and cabinets on the reverse side. Each cabinet contains an adjustable shelf.
- » The drawers are dovetailed solid hardwood and are mounted on full extension soft-close undermount slides.
- » The included decorative hardware can be found in the Jeffrey Alexander Regency collection (item # 1099).
- » 2-3/8" birch end grain butcher block top sold separately (ISL06-TOP). Made with food-safe glues and finishing materials. Installation required for top.

Technical Specifications

- » Drawer slides: 18" full extension soft-close undermount slides
- » Wine rack is fully removable
- » Dimensional drawings on page 590 and available at www.hardwareresources.com



reverse side



ISL06-AWH Antique White
ISL06-DBK Distressed Black
57-11/16" x 33-15/16" x 34-1/8" (without top)
58-3/8" x 35" x 36-1/2" (including top)

ISL06-TOP (top sold separately)
58-3/8" x 35" x 2-3/8"
Birch
End grain butcher block top
Food-safe glues and finishing materials



Kitchen islands



ISL05-AWH



ISL05-DBK

Milanese Island

- » Cabinet style island manufactured using the highest quality furniture grade hardwoods and MDF wood.
- » The island features three working drawers and two tall cabinets on one side and three working drawers above additional cabinet storage on the reverse side. Tall cabinets include two adjustable shelves in each cabinet. Reverse side cabinets include one adjustable shelf per cabinet.
- » The drawers are dovetailed solid hardwood and are mounted on full extension soft-close undermount slides.
- » The included decorative hardware can be found in the Jeffrey Alexander Milan collection (item # 1093, 1094). Coordinating posts are available from Hardware Resources (item # FP1).
- » 1-3/4" hard maple edge grain butcher block top sold separately (ISL05-TOP). Made in the USA with FDA approved food-safe glues and finishing materials. Sealed with a proprietary blend of all-natural products designed to keep your island top looking ageless. Installation required for top.



reverse side



Technical Specifications

- » Drawer pull measurement: 96mm (3.78") center-to-center
- » Drawer slides: 12" and 18" full extension soft-close undermount slides
- » Dimensional drawings on page 590 and available at www.hardwareresources.com

ISL05-AWH Antique White
ISL05-DBK Distressed Black
63-1/8" x 37-1/2" x 34-1/4" (without top)
64" x 38-1/2" x 36" (including top)

ISL05-TOP (top sold separately)
64" x 38-1/2" x 1-3/4"
Hard maple
Edge grain butcher block top
Food-safe glues and finishing materials



ISL04-AWH



ISL04-DBK

Petite Island

- » Table style island manufactured using the highest quality furniture grade hardwoods and MDF wood.
- » The island features two working drawers on one side and a decorative panel on the reverse side.
- » The drawers are dovetailed solid hardwood and are mounted on full extension soft-close undermount slides.
- » The included decorative hardware can be found in the Jeffrey Alexander Lafayette collection (item # 317-128).
- » 3" birch end grain butcher block top preinstalled. Made with food-safe glues and finishing materials.
- » Assembly required for posts. Assembly instructions and hardware included.

Technical Specifications

- » Drawer pull measurement: 128mm (5.04") center-to-center
- » Drawer slides: 15" full extension soft-close undermount slides
- » Dimensional drawings on page 590 and available at www.hardwareresources.com



reverse side



ISL04-AWH Antique White
ISL04-DBK Distressed Black
36" x 24" x 36" (top preinstalled)

Preinstalled Top
36" x 24" x 3"
Birch
End grain butcher block top
Food-safe glues and finishing materials



ISL04R-AWH



ISL04R-DBK

Round Petite Island

- » Round table style island manufactured using the highest quality furniture grade hardwoods and MDF wood.
- » The island features two fully functional drawers, one on each side, and two pivot drawers on the opposite sides for extra storage.
- » The drawers are dovetailed solid hardwood and are mounted on full extension soft-close undermount slides.
- » The included decorative hardware can be found in the Jeffrey Alexander Lafayette collection (item # 417).
- » 3" birch end grain butcher block top preinstalled. Made with food-safe glues and finishing materials.
- » Assembly required for posts. Assembly instructions included.

Technical Specifications

- » Drawer slides: 12" and 15" full extension soft-close undermount slides
- » Dimensional drawings on page 590 and available at www.hardwareresources.com

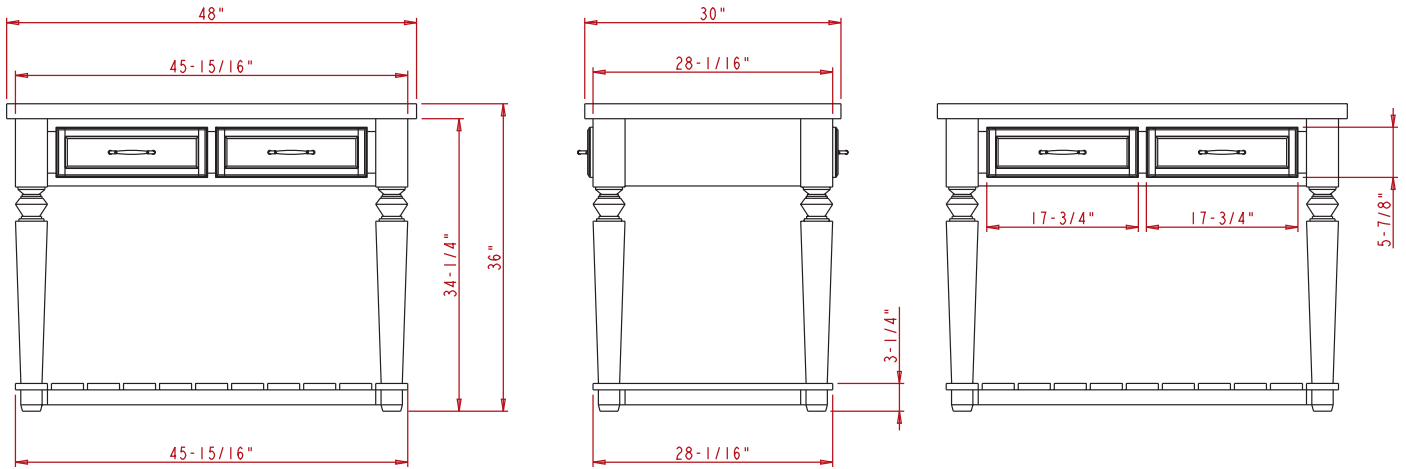


ISL04R-AWH Antique White
ISL04R-DBK Distressed Black
36" diameter x 36" (top preinstalled)

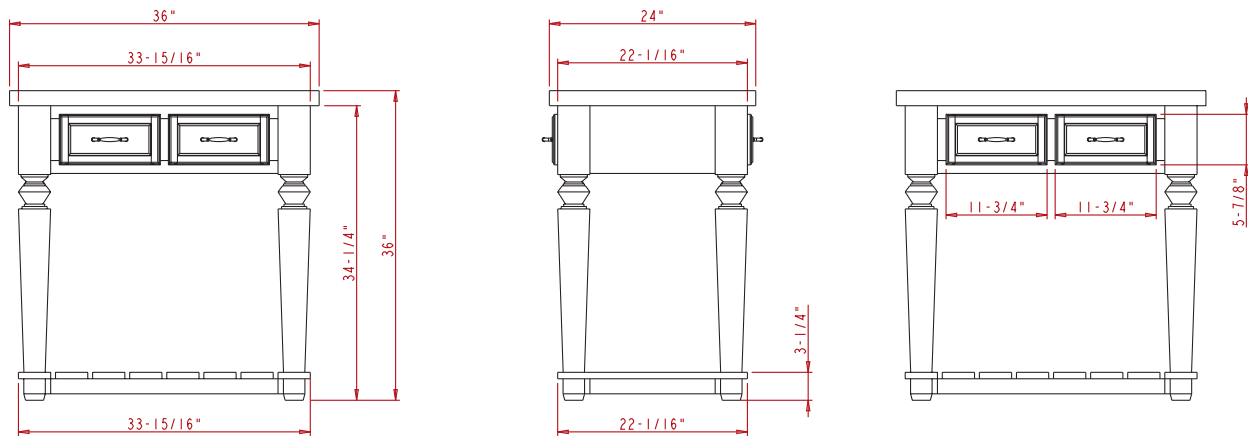
Preinstalled Top
36" diameter x 3"
Birch
End grain butcher block top
Food-safe glues and finishing materials

Island Dimensional Drawings

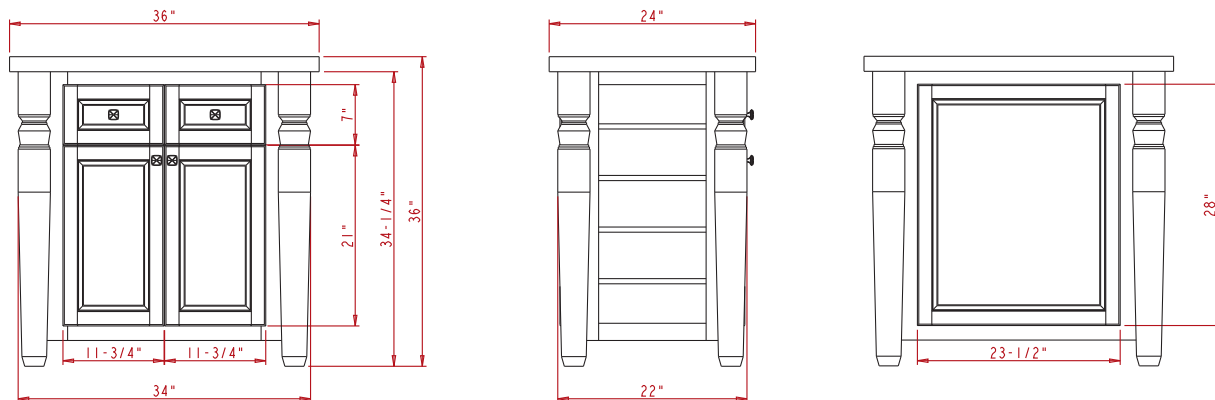
ISL09



ISL10



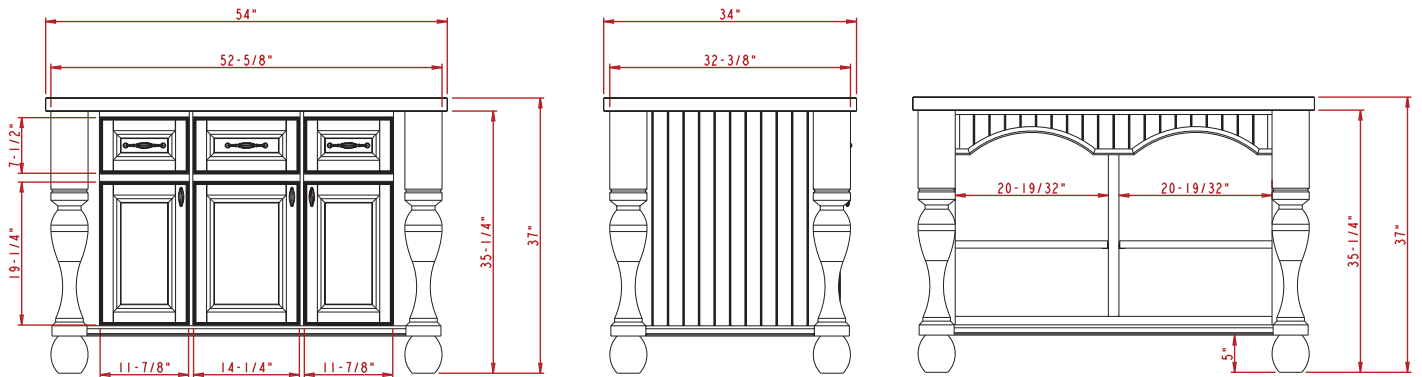
ISL12



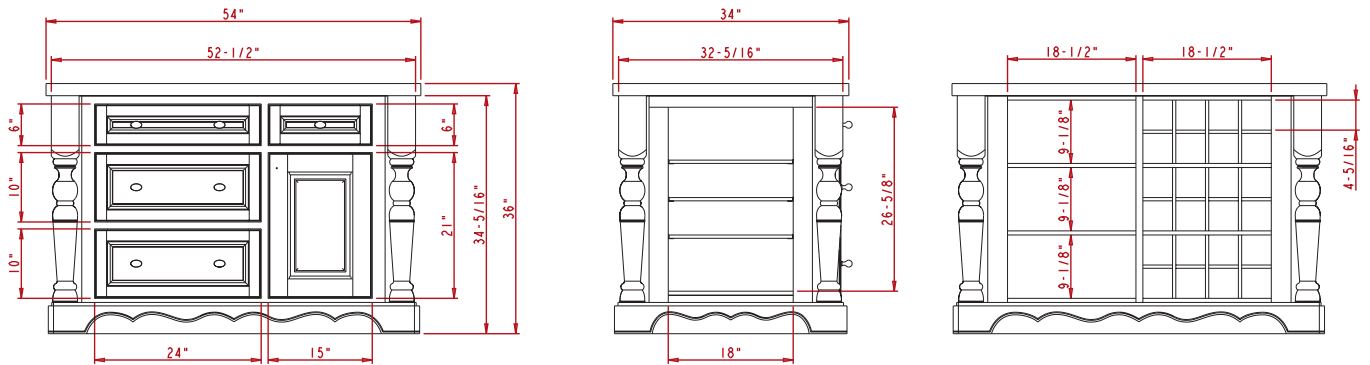
Kitchen islands

Island Dimensional Drawings

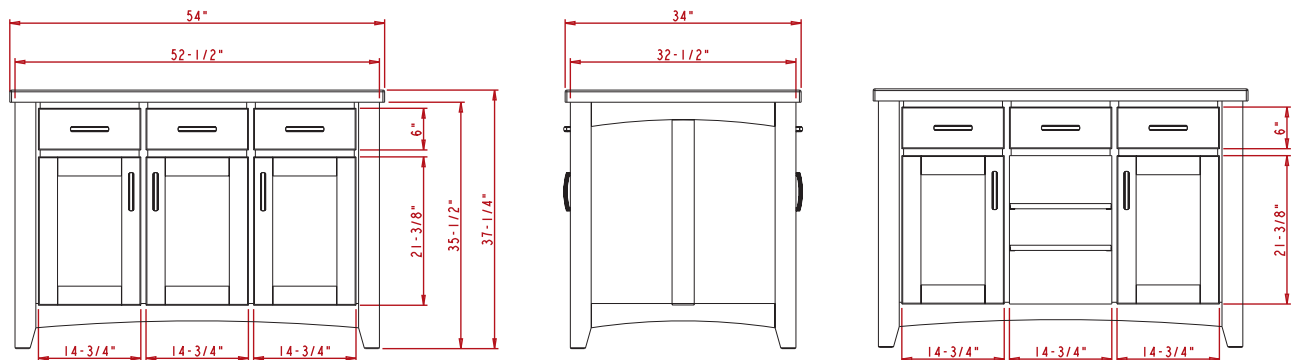
ISL01



ISL02

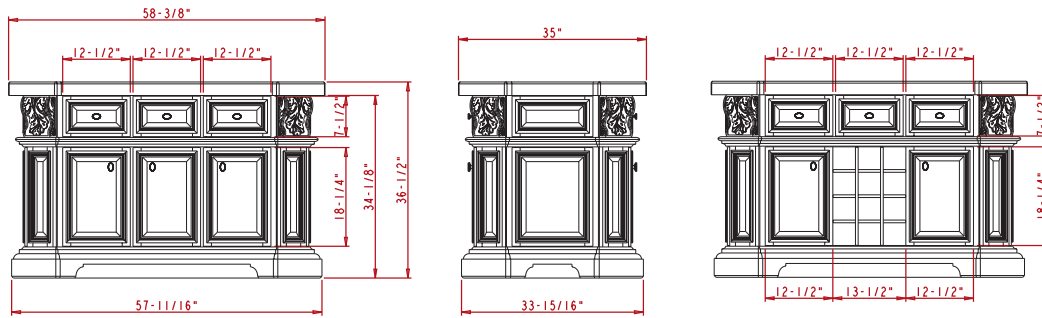


ISL07

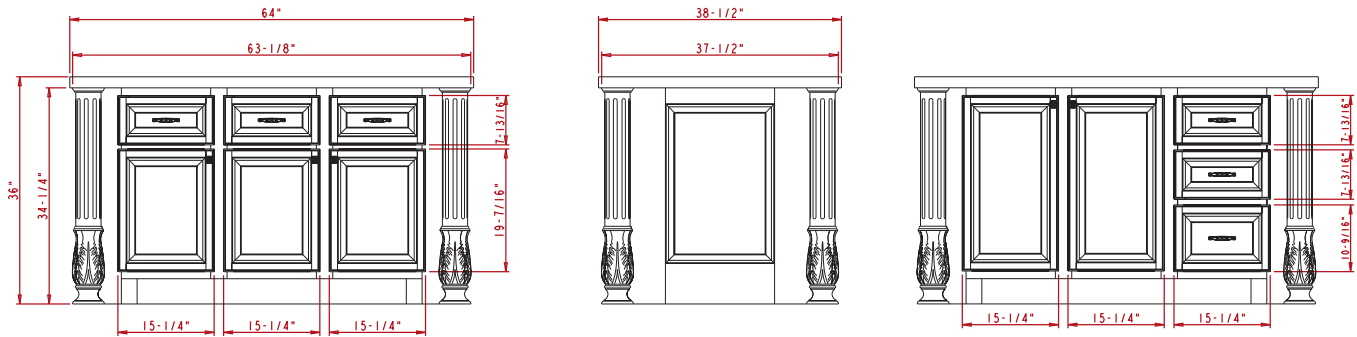


Island Dimensional Drawings

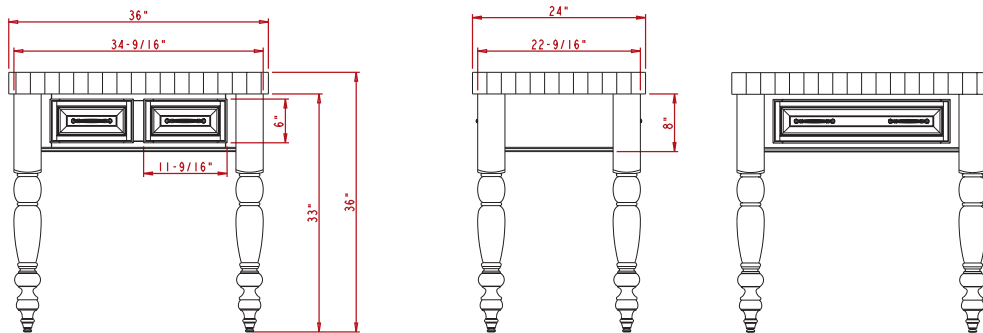
ISL06



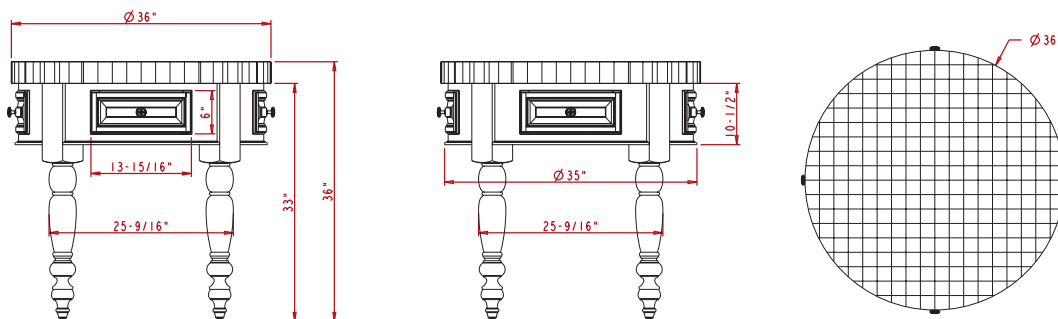
ISL05



ISL04



ISL04R



kitchen islands