



Buy it for looks. Buy it for life.®



Designed for Living  
Bath Accessories 2012

Just a few of the reasons you'll love living and working with Moen® products.



### What Sets Moen® Products Apart?

With finishes that are guaranteed to last a lifetime, Moen® products set the standard for exceptional beauty, reliability and innovative design.

### Limited Lifetime Warranty

Moen® and Home Care® products feature a Limited Lifetime Warranty. Visit [moen.com](http://moen.com) for complete warranty information.



### Core Five, Plus So Much More

The majority of our bath accessory collections feature a towel ring, a robe hook, both an 18-in. and a 24-in. towel bar and a paper holder. But there is so much more - hotel shelves, tank levers, mirrors and glass shelves are offered in many collections.

### Moen® Lighting

Lighting fixtures are available in four of the most popular Moen® bathroom collections. All of the fixtures can be mounted with globes facing either up or down.

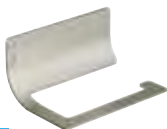


In addition to high-end style, our lighting provides installation benefits. Quick-connect wiring allows installers to pre-wire the light fixture to the junction box, meaning there is no need to hold the fixture up to the wall during the wiring process. Glazed sockets ensure the socket rings install with ease. Additionally, the UL®-listed fixtures are backed by the Moen® Limited Lifetime Warranty and industry-leading customer service.

INTERIOR DESIGN  
**BEST OF YEAR HONOREE 2011**

### Award Winning Styles

The Moen® Viq™ collection was named an honoree for Best of Year 2011 by *Interior Design* magazine.



The Best of Year Awards is the preeminent design competition recognizing superior interior design products.

### Retractable Towel Ring

Let your hand towel come to you – and put itself away automatically. Our innovative towel ring expands out up to 11" and effortlessly retracts back to its original position, keeping hand towels off the floor or counter and easily within reach. Great for everyone – especially children! It's the perfect way to keep a bath, kitchen or utility area neat and organized.



### Wallmount Hair Dryer

Keep an everyday essential stylishly within reach. The Moen® Voss™ wallmounted hair dryer holder comes in three on-trend finishes and offers a transitional style that feels at home in both modern and traditional décors. It's designed to easily cradle most hair dryer models – from compact to full size.

### Decorative Tank Levers

Beautifully designed, our decorative tank levers install in minutes without the need for special tools or draining the tank. Available in a variety of styles and finishes, you can choose the decorative tank lever that best matches your bath décor. All are designed to fit side, angle or front-mount tanks.



### Who Knew One Little Product Could Make Switching Out Shower Curtains and Liners So Easy?

The double shower curtain rings stand out for their style, functionality and ease of use! Their unique offset design separates the decorative curtain from the liner allowing the latter to be hidden from view.



### Hotel Shelves

Eva®, Kingsley® and Iso™ Decorative Hotel Shelves help create the luxurious, coordinated styling of an upscale hotel in your own home.



### **Double Curved Shower Rods**

In smaller rooms, such as the bathroom, space and storage are key concerns. Luckily, you can create up to 5.5-in. of additional elbow room in the shower – while providing visual appeal and adding extra hanging space – with the Double Curved Shower Rod. These innovative rods are available in three of today's most popular finishes and offer an additional rod to separate the decorative shower curtain from the shower liner.

### **Knobs and Pulls**

With our distinctive collection of knobs and pulls, you can create a perfectly matched bath. Available in a selection of styles and finishes.



### **Pivoting**

### **Pivoting Paper Holders**

Now there's no excuse to leave the bath tissue roll empty!

The innovative, spring-free design makes changing the roll quick and easy. Simply lift the arm, insert new roll and set the arm back into place. The pivoting arm remains attached so there's no spring to lose and no extra parts to drop.

### **Mirrorscapes® Mirror Frames**

Transform your plain, plate glass mirror into an absolute vision with this innovative mirror framing system. In only minutes, you can achieve the unmistakable appearance of a stunning custom-made frame.





The industry's most distinctive portfolio of accessories are designed with styles and finishes to match Moen® faucets, making it easy to create a perfectly matched bath.

## Moen® Collections

 **MOEN**  
Buy it for looks. Buy it for life.®

# Weymouth®



PERFECTLY MATCHED! Weymouth® makes a bold statement with distinctive accents, including porcelain inlays that feature Euro-influenced decorative script and signature styling elements like a refined finial.



- YB8401 Decorative Tank Lever
- YB8403 Double Robe Hook
- YB8408 Pivoting Paper Holder
- YB8418 18" Towel Bar
- YB8424 24" Towel Bar
- YB8486 Towel Ring
- YB8495 Door Sign

## Finishes Available



**(BN)**  
Brushed Nickel



**(CH)**  
Chrome



**(ORB)**  
Oil Rubbed  
Bronze

**NEW!**



**(NL)**  
Polished Nickel

Fina®



PERFECTLY MATCHED! Fina® accessories complete the soft, modern look of your bath, with final masterstrokes adding nuance and depth.



- YB9201 Decorative Tank Lever
- YB9203 Double Robe Hook
- YB9208 Pivoting Paper Holder
- YB9218 18" Towel Bar
- YB9222 24" Double Towel Bar
- YB9224 24" Towel Bar
- YB9286 Towel Ring/Bar
- YB9290 Glass Shelf/Towel Bar Combo  
(20"W x 5.08"D x 2.0"H)

**Finishes Available**



**(BN)**  
Brushed Nickel



**(CH)**  
Chrome



PERFECTLY MATCHED! Add style at every turn with Felicity® bath accessories – the perfect finishes to make your bath complete.



- YB9701 Decorative Tank Lever
- YB9703 Double Robe Hook
- YB9708 Pivoting Paper Holder
- YB9718 18" Towel Bar
- YB9724 24" Towel Bar
- YB9786 Towel Ring
- YB9790 Glass Shelf/Towel Bar Combo  
(24"W x 4.0"D x 4.6"H)

**Finishes Available**



**(BN)**  
Brushed Nickel



**(CH)**  
Chrome



**(ORB)**  
Oil Rubbed Bronze





PERFECTLY MATCHED! Make a bold statement in your bath with Felicity® Lights, the perfect style and finish match!



- YB9761 One-Globe Light
- YB9762 Two-Globe Light
- YB9763 Three-Globe Light
- YB9764 Four-Globe Light



Bulbs not included.

All Felicity® lighting fixtures can be mounted with globes either facing upward or downward.

#### Finishes Available



**(BN)**  
Brushed Nickel



**(CH)**  
Chrome



**(ORB)**  
Oil Rubbed Bronze



PERFECTLY MATCHED! Waterhill® accessories have a time-honored presence that gives your bath traditional charm.



- YB9801 Decorative Tank Lever
- YB9803 Double Robe Hook
- YB9805 Cabinet Knob
- YB9807 Drawer Pull
- YB9808 Pivoting Paper Holder
- YB9818 18" Towel Bar
- YB9822 24" Double Towel Bar
- YB9824 24" Towel Bar
- YB9886 Towel Ring
- YB9899 Glass Shelf With Pivoting Railing  
(22.76"W x 5.19"D x 3.64"H)

**Finishes Available**



**(BN)**  
Brushed  
Nickel



**(CH)**  
Chrome



**(ORB)**  
Oil Rubbed  
Bronze



**(NL)**  
Polished  
Nickel



**(WR)**  
Wrought  
Iron

Knobs and pulls available in BN, CH and ORB only



PERFECTLY MATCHED! Timelessly styled, Waterhill® Lighting bathes your room in warmth and comfort.



- YB9861 One-Globe Light
- YB9862 Two-Globe Light
- YB9863 Three-Globe Light
- YB9864 Four-Globe Light



Bulbs not included.

**Finishes Available**



**(BN)**  
Brushed Nickel



**(CH)**  
Chrome



**(ORB)**  
Oil Rubbed Bronze

# Bamboo®



PERFECTLY MATCHED! Bamboo® Bath Accessories pull your whole room together with an earthy influence that gives your bath a relaxed, one-of-a-kind feeling.



- YB9501 Decorative Tank Lever
- YB9503 Robe Hook
- YB9505 Cabinet Knob
- YB9507 Drawer Pull
- YB9508 Pivoting Paper Holder
- YB9518 18" Towel Bar
- YB9522 24" Double Towel Bar
- YB9524 24" Towel Bar
- YB9586 Towel Ring
- YB9595 13" Curved Towel Bar With Shelf  
(15"W x 5.5"D x 3.6"H)

#### Finishes Available



**(BN)**  
Brushed Nickel



PERFECTLY MATCHED! Ultramodern, minimalist, the 90°™ accessory collection boldly features precise angles. Its lines, its look and its durable functionality project a simple sophistication for today's baths.



YB8801	Decorative Tank Lever
YB8803	Robe Hook
YB8805	Cabinet Knob
YB8807	Drawer Pull
YB8808	Pivoting Paper Holder
YB8818	18" Towel Bar
YB8824	24" Towel Bar
YB8886	Towel Ring/Bar

#### Finishes Available



**(BN)**  
Brushed Nickel



**(CH)**  
Chrome



PERFECTLY MATCHED! Rothbury™ accessories offer a relaxed blend of vintage design and traditional elements to complete your bath.



- YB8201 Decorative Tank Lever
- YB8203 Double Robe Hook
- YB8205 Cabinet Knob
- YB8207 Drawer Pull
- YB8208 Pivoting Paper Holder
- YB8218 18" Towel Bar
- YB8222 24" Double Towel Bar
- YB8224 24" Towel Bar
- YB8286 Towel Ring/Bar
- YB8290 Glass Shelf [23.2"W x 5.2"D x 3.4"H]

#### Finishes Available



**(AZ)**  
Antique  
Bronze



**(BN)**  
Brushed  
Nickel



**(CH)**  
Chrome



**(ORB)**  
Oil Rubbed  
Bronze

Knobs and pulls available in BN, CH and ORB only



PERFECTLY MATCHED! Rothbury™ Lights offer a relaxed blend of vintage design and traditional elements to complete your bath.



- YB8261 One-Globe Light
- YB8262 Two-Globe Light
- YB8263 Three-Globe Light



Bulbs not included.

All Rothbury™ lighting fixtures can be mounted with globes either facing upward or downward.

**Finishes Available**



**(BN)**  
Brushed Nickel



**(CH)**  
Chrome



**(ORB)**  
Oil Rubbed Bronze



With  
**PRO+FIT™**  
**INSTALLATION SYSTEM**  
 See page 26  
 for more information

PERFECTLY MATCHED! Sleek and bold, Icon™ accessories bring a clean and modern look to the bath.



- YB5801 Decorative Tank Lever
- YB5803 Double Robe Hook
- YB5805 Cabinet Knob
- YB5807 Drawer Pull
- YB5808 Pivoting Paper Holder
- YB5818 18" Towel Bar
- YB5822 24" Double Towel Bar
- YB5824 24" Towel Bar
- YB5886 Towel Ring
- YB5890 Glass shelf (20.3"W x 5.6"D x 3.4"H)

**Finishes Available**



**(BB)**  
**Brushed Bronze**



**(BN)**  
**Brushed Nickel**



**(CH)**  
**Chrome**

Knobs and pulls available in BN and CH only



NEW!



PERFECTLY MATCHED! Voss™ accessories feature simple lines and a tailored, clean structure that works beautifully with any decor.



- YB5101 Decorative Tank Lever
- YB5103 Double Robe Hook
- YB5108 Pivoting Paper Holder
- YB5118 18" Towel Bar
- YB5124 24" Towel Bar
- YB5186 Towel Ring
- YB5170 Wallmount Hair Dryer Holder

**Finishes Available**



**(BN)**  
Brushed Nickel



**(CH)**  
Chrome



**(ORB)**  
Oil Rubbed Bronze



PERFECTLY MATCHED! For design flexibility and enduring style, choose the Kingsley® collection, richly appointed with graceful curves.



## Finishes Available



**(AZ)**  
Antique  
Bronze



**(AN)**  
Antique  
Nickel



**(BN)**  
Brushed  
Nickel



**(CH)**  
Chrome



**(ORB)**  
Oil Rubbed  
Bronze

**NEW!**



**(PB)**  
Polished  
Brass



**(WR)**  
Wrought  
Iron



YB5401	Decorative Tank Lever
YB5403	Double Robe Hook
YB5405	Cabinet Knob
YB5407	Drawer Pull
YB5408	Pivoting Paper Holder
YB5418	18" Towel Bar
YB5422	24" Double Towel Bar
YB5424	24" Towel Bar
YB5444	Wallmount Toothbrush Holder
YB5466	Wallmount Liquid Soap Holder
YB5486	Towel Ring
YB5490	Glass Shelf (22.8"W x 5.3"D x 2.9"H)
YB5494	Hotel Shelf (26.8"W x 10"D x 6.4"H)

Finish availability varies by SKU. Consult BA0400 or BA500 for complete collection details.



**SecureMount™**

**Grab Bars**

PERFECTLY MATCHED! Beautifully designed to match Moen® Kingsley® Faucets and Bath Accessories. ADA-compliant.

YG5412	12" Grab Bar
YG5418	18" Grab Bar
YG5424	24" Grab Bar
YG5430	30" Grab Bar
YG5436	36" Grab Bar
YG5442	42" Grab Bar

#### Finishes Available



**(BN)**  
**Brushed Nickel**



**(CH)**  
**Chrome**



**(ORB)**  
**Oil Rubbed Bronze**



Complies with Americans with Disabilities Act (ADA) specifications. SecureMount™ Grab Bars tested to withstand 500 lbs. pull when installed per instructions.

# Decorator



PERFECTLY MATCHED! Decorator accessories offer smooth, fluid curves and perfectly match Moen® Monticello® faucets.



- |        |                                      |
|--------|--------------------------------------|
| YB4703 | Double Robe Hook                     |
| YB4708 | Paper Holder                         |
| YB4718 | 18" Towel Bar                        |
| YB4724 | 24" Towel Bar                        |
| YB4786 | Towel Ring                           |
| YB4790 | Glass Shelf (22.8"W x 3.1"D x 5.3"H) |

## Finishes Available



**(BN)**  
Brushed Nickel



**(CH)**  
Chrome



**(CP)**  
Chrome &  
Polished Brass



**(PB)**  
Polished Brass



**SecureMount™**



Interchangeable  
accent rings

(Available in chrome only with interchangeable rings - CHP)

Decorator Grab Bars: Beautifully designed to match our Decorator Suite bath accessories, Decorator grab bars are available in chrome finish and include interchangeable chrome or polished brass accent rings for two looks in one package. ADA-Compliant.

YG4712	12" Grab Bar
YG4718	18" Grab Bar
YG4724	24" Grab Bar
YG4730	30" Grab Bar
YG4736	36" Grab Bar



Complies with Americans with Disabilities Act (ADA) specifications. SecureMount™ Grab Bars tested to withstand 500 lbs. pull when installed per instructions.



PERFECTLY MATCHED! This classic suite is designed to seamlessly coordinate with the popular Moen® Vestige® faucets.



- YB5601 Decorative Tank Lever
- YB5603 Double Robe Hook
- YB5608 Pivoting Paper Holder
- YB5618 18" Towel Bar
- YB5622 24" Double Towel Bar
- YB5624 24" Towel Bar
- YB5686 Towel Ring
- YB5690 Glass Shelf [22"W x 5.2"D x 2.7"H]

**Finishes Available**



**(BB)**  
Brushed Bronze



**(CH)**  
Chrome



**(ORB)**  
Oil Rubbed  
Bronze



**(PW)**  
Pewter

# Brantford™



With  
**PRO+FIT™**  
INSTALLATION SYSTEM  
See page 26  
for more information

PERFECTLY MATCHED! With distinguished features, Brantford™ accessories offer a soft style solution for the bath.



- |        |                       |
|--------|-----------------------|
| YB2201 | Decorative Tank Lever |
| YB2203 | Double Robe Hook      |
| YB2208 | Paper Holder          |
| YB2218 | 18" Towel Bar         |
| YB2224 | 24" Towel Bar         |
| YB2286 | Towel Ring            |

#### Finishes Available



**(BN)**  
Brushed Nickel



**(CH)**  
Chrome



**(ORB)**  
Oil Rubbed Bronze

With

**PRO+FIT™**  
 INSTALLATION SYSTEM

 See page 26  
 for more information

PERFECTLY MATCHED! Eva® accessories have a sophistication that is both livable and enduring. With flowing curves, this transitional design offers an elegant appeal that works well in nearly any setting.



YB2801	Decorative Tank Lever
YB2803	Robe Hook
YB2808	Paper Holder
YB2818	18" Towel Bar
YB2824	24" Towel Bar
YB2886	Towel Ring
YB2894	Hotel Shelf (26"W x 10.7"D x 7"H)

**Finishes Available**

**(BN)**  
 Brushed Nickel

**(CH)**  
 Chrome

**(ORB)**  
 Oil Rubbed Bronze



# Method™

With

**PRO+FIT™**  
INSTALLATION SYSTEM

See page 26  
for more information



PERFECTLY MATCHED! With modern, smooth curves, Method™ accessories enhance the contemporary bath.



- |        |                       |
|--------|-----------------------|
| YB2401 | Decorative Tank Lever |
| YB2403 | Double Robe Hook      |
| YB2408 | Pivoting Paper Holder |
| YB2418 | 18" Towel Bar         |
| YB2424 | 24" Towel Bar         |
| YB2486 | Towel Ring/Bar        |

#### Finishes Available



**(BN)**  
Brushed Nickel



**(CH)**  
Chrome

# Mason®

With  
**PRO+FIT™**  
INSTALLATION SYSTEM

See Below  
for more information

PERFECTLY MATCHED! It's a classic design that will enhance any bath. The Mason® collection's rounded design is extroverted without being showy, substantial without being overbearing, bold without being brash. Matches Moen® Chateau® faucets.



YB8000	Mounting Posts (Pair)
YB8003	Double Robe Hook
YB8099	Paper Holder (Roller only)
YB8098	18" Towel Bar (Bar only)
YB8094	24" Towel Bar (Bar only)
YB8086	Towel Ring
YB8088	Double Paper Holder (available in CH and SN only)

#### Finishes Available



**[BC]**  
Brushed  
Chrome



**[CH]**  
Chrome



**[OWB]**  
Old World  
Bronze



**[PB]**  
Polished  
Brass



**[SN]**  
Satin  
Nickel

## The Pro+Fit™ Installation System

The Moen® 3-step Pro+Fit™ Installation System is the most innovative, simple way to mount bath accessories. The design helps reduce installation time to one-third that of standard bath accessories. Installation is as easy as 1-2-3.

- 1. Drill It:** Use the installation mounting template with built-in level.
- 2. Screw It:** Screw in the pre-attached fastener.
- 3. Click It:** Press on the post until it locks into place.



The Pro+Fit™ System eliminates set-screws for faster, more durable mounting.

There's even a template with a built-in level.



YB8081  
Pro+Fit™ Installation Template



Moen® Inspirations® collections are designed to enhance the beauty of your bath. And with innovative products, like our space-enhancing curved shower rod, easy-loading pivoting paper holders, and Mirrorscapes® framing options, Moen® Inspirations® products also enhance the functionality of the bath.

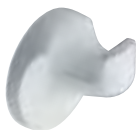
## Moen® Inspirations® Collections

 **MOEN**  
Buy it for looks. Buy it for life.®

# Aspen



The Aspen collection's soft, subtle shapes take the edge off any setting, allowing form and function to flow as one.



- 5802 Robe Hook
- 5808 Paper Holder
- 5818 18" Towel Bar
- 5824 24" Towel Bar
- 5886 Towel Ring

## Finishes Available



**[CH]**  
Chrome



**[W]**  
White

# Cabrina®



The petal-and-droplet posts and organic elegance of Cabrina® suggest a setting of natural tranquility.



- |        |                       |
|--------|-----------------------|
| DN8503 | Robe Hook             |
| DN8508 | Pivoting Paper Holder |
| DN8518 | 18" Towel Bar         |
| DN8524 | 24" Towel Bar         |
| DN8586 | Towel Ring            |

## Finish Available



**(BN)**  
Brushed Nickel



The Danbury® collection's blend of bold and delicate, tapered and tiered, offers a discreet complement to a variety of bath décors.



- DN6703 Double Robe Hook
- DN6708 European Paper Holder
- DN6718 18" Towel Bar
- DN6724 24" Towel Bar
- DN6786 Towel Ring

**Finishes Available**



**(BN)**  
Brushed Nickel



**(ORB)**  
Oil Rubbed Bronze



The Gilcrest® collection's rich styling and fluted accents marry antique charm with contemporary sophistication.



- DN0803 Double Robe Hook
- DN0808 Pivoting Paper Holder
- DN0818 18" Towel Bar
- DN0822 24" Double Towel Bar
- DN0824 24" Towel Bar
- DN0886 Towel Ring
- DN0892 Mirror with Pivoting Decorative Hardware (23.9"W x 3"D x 26"H)

**Finish Available**



**(ORB)**  
**Oil Rubbed Bronze**



With a modern streamlining of a classic design, Glenshire® creates a blend of old and new that's never out of style.



- DN2603 Double Robe Hook
- DN2608 Paper Holder
- DN2618 18" Towel Bar
- DN2622 24" Double Towel Bar
- DN2624 24" Towel Bar
- DN2686 Towel Ring
- DN2692 Mirror with Pivoting Decorative Hardware (22.8"W x 2.5"D x 26"H)

#### Finishes Available



**(BN)**  
Brushed Nickel



**(CH)**  
Chrome





The Iso™ collection's look of telescoping design infuses industrial elements into European minimalist as it boldly, and beautifully, embraces the future.

- |        |  |        |  |
|--------|--|--------|--|
| DN0703 | Robe Hook                                      | DN0763 | Three-Globe Light  |
| DN0705 | Cabinet Knob                                   | DN0764 | Four-Globe Light   |
| DN0707 | Drawer Pull                                    | DN0766 | Wallmount Soap Holder — plastic dish                             |
| DN0708 | Pivoting Paper Holder                          | DN0786 | Towel Ring   |
| DN0709 | Single-Post Paper Holder                       | DN0790 | Glass Shelf [20.4"W x 5.4"D x 2.6"H]                             |
| DN0718 | 18" Towel Bar                                  | DN0792 | Mirror With Pivoting Decorative Hardware [25.7"W x 2.2"D x 22"H] |
| DN0722 | 24" Double Towel Bar                           | DN0794 | Hotel Shelf [27"W x 10.7"D x 6.4"H]                              |
| DN0724 | 24" Towel Bar                                  |        |  |
| DN0744 | Wallmount Toothbrush/Tumbler — plastic tumbler |        |  |
| DN0761 | One-Globe Light                                |        |  |
| DN0762 | Two-Globe Light                                |        |  |

**Finishes Available**



**(BN)**  
Brushed Nickel



**(CH)**  
Chrome



All Iso™ lighting fixtures can be mounted with globes either facing upward or downward.

Bulbs not included

# Lounge™



The floating ball design and slender, shapely posts help Lounge™ accessories lend a carefree spirit to their surroundings.



- DN7703 Double Robe Hook
- DN7708 European Paper Holder
- DN7718 18" Towel Bar
- DN7722 24" Double Towel Bar
- DN7724 24" Towel Bar
- DN7786 Towel Ring
- DN7790 Glass Shelf (24"W x 5.5"D x 3.2"H)

## Finishes Available



**(BN)**  
Brushed Nickel



**(CH)**  
Chrome

# Madison



Rounded posts and solid contours give Madison accessories a personality that's robust yet refined.



- |        |                       |
|--------|-----------------------|
| BP6903 | Double Robe Hook      |
| BP6908 | Paper Holder          |
| BP6918 | 18" Towel Bar         |
| BP6924 | 24" Towel Bar         |
| BP6980 | European Paper Holder |
| BP6986 | Towel Ring            |

## Finishes Available



**(CH)**  
Chrome



**(OWB)**  
Old World  
Bronze



**(PW)**  
Pewter

# Parlor™

**NEW!**



The Parlor™ collection is classic in so many ways. Soft curves and a perfect sphere give these accessories a slightly vintage touch.



- DN5403 Pullout Robe Hook
- DN5408 Pivoting Paper Holder
- DN5418 18" Towel Bar
- DN5424 24" Towel Bar
- DN5486 Towel Ring

#### Finishes Available



**(BN)**  
Brushed Nickel



**(CH)**  
Chrome



**(BRB)**  
Mediterranean Bronze

# Preston



The Preston collection's simplicity is its main motif; its low-key appearance acts as a subtle accent that complements the décor.



- DN8403 Double Robe Hook
- DN8408 Paper Holder
- DN8418 18" Towel Bar (3/4" Round Bar)
- DN8422 24" Double Towel Bar (5/8" Round Bar)
- DN8424 24" Towel Bar (3/4" Round Bar)
- DN8486 Towel Ring
- DN8490 Glass Shelf (19.5"W x 4.5"D x 2.2"H)

## Finishes Available



**(BN)**  
Brushed Nickel



**(CH)**  
Chrome



**(MPW)**  
Matte Pewter



**(PB)**  
Polished Brass



The Reed™ collection's open post design injects an element of modernism into a traditional style. It's a look that's classic yet not entirely conventional.



- |        |                                      |
|--------|--------------------------------------|
| DN1003 | Double Robe Hook                     |
| DN1008 | Pivoting Paper Holder                |
| DN1018 | 18" Towel Bar                        |
| DN1024 | 24" Towel Bar                        |
| DN1086 | Towel Ring                           |
| DN1090 | Glass Shelf (19.5"W x 5.5"D x 2.1"H) |

#### Finishes Available



**(CH)**  
Chrome

# Retreat®



The softly curving, edged silhouette of the Retreat® collection adds a touch of sophistication and serenity to the bath.



- DN8303 Robe Hook
- DN8308 Pivoting Paper Holder
- DN8318 18" Towel Bar
- DN8322 24" Double Towel Bar
- DN8324 24" Towel Bar
- DN8386 Towel Ring
- DN8390 Glass Shelf [22"W x 5.9"D x 2.6"H]

## Finishes Available



**(BN)**  
Brushed Nickel



**(CH)**  
Chrome



The delicate, unadorned style of each Sage® accessory is a study in tasteful simplicity, imparting an air of calmness.



DN6801	Decorative Tank Lever
DN6803	Robe Hook
DN6808	Paper Holder
DN6818	18" Towel Bar
DN6822	24" Double Towel Bar
DN6824	24" Towel Bar
DN6850	Freestanding Paper Holder
DN6886	Towel Ring
DN6890	Glass Shelf (22.75"W x 5.5"D x 3.1"H)
DN6892	Mirror with Pivoting Decorative Hardware (22.8"W x 2.6"D x 26"H)

**Finishes Available**



**(BN)**  
Brushed Nickel



**(CH)**  
Chrome




**(ORB)**  
Oil Rubbed Bronze

Finish availability varies by SKU. Consult BA0400 or BA0500 for complete collection details.





Handcrafted twists and curls on Sienna® accessories add an enduring Old World character to the bath.

- |        |   |   |
|--------|---|---|
| DN4901 | Decorative Tank Lever                                   |  |
| DN4903 | Robe Hook   |   |
| DN4908 | Paper Holder  |   |
| DN4918 | 18" Towel Bar   |   |
| DN4922 | 24" Double Towel Bar                                    |   |
| DN4924 | 24" Towel Bar   |   |
| DN4950 | Freestanding Paper Holder                               |   |
| DN4986 | Towel Ring  |   |
| DN4990 | Glass Shelf (22.3"W x 6"D x 2.4"H)                      |   |
| DN4992 | Mirror with Decorative Hardware (19"W x 1.5"D x 27.6"H) |   |

**Finish Available**



**(BK)**  
**Black**



The repeating parallel rings and rounded end posts on Stockton® accessories calmly create a sense of order and stability.



- |        |                                    |
|--------|------------------------------------|
| DN4103 | Double Robe Hook                   |
| DN4108 | Pivoting Paper Holder              |
| DN4118 | 18" Towel Bar                      |
| DN4122 | 24" Double Towel Bar               |
| DN4124 | 24" Towel Bar                      |
| DN4150 | Freestanding Pivoting Paper Holder |
| DN4186 | Towel Ring                         |
| DN4190 | Glass Shelf (22.8"W x 5.1"D x 3"H) |

**Finish Available**



**(BN)**  
**Brushed Nickel**

Viq™

NEW!



INTERIOR DESIGN  
**BEST OF YEAR HONOREE 2011**

Viq™ accessories are the very definition of modern and uniform. Each piece blends seamlessly against the wall, flowing consistently in size and shape with the next.



- DN6403 Triple Robe Hook
- DN6408 Pivoting Paper Holder
- DN6418 18" Towel Bar
- DN6444 Tumbler / Toothbrush Holder
- DN6486 Towel Ring / Bar

**Finishes Available**



**(BN)**  
Brushed Nickel



**(CH)**  
Chrome



With a Chess-piece motif, the Wembley® collection of accessories produces an effect that is both smart and charming.



- DN8203 Double Robe Hook
- DN8208 Pivoting Paper Holder
- DN8218 18" Towel Bar
- DN8222 24" Double Towel Bar
- DN8224 24" Towel Bar
- DN8286 Towel Ring
- DN8290 Glass Shelf [22"W x 6"D x 3.1"H]

**Finish Available**



**(BN)**  
**Brushed Nickel**

## Yorkshire



Slender posts and smooth graceful lines make a delicately beautiful statement throughout the Yorkshire collection of accessories.



BP5303	Double Robe Hook
BP5308	Paper Holder
BP5318	18" Towel Bar
BP5324	24" Towel Bar
BP5380	European Paper Holder
BP5386	Towel Ring

### Finishes Available



**[CH]**  
Chrome



**[OWB]**  
Old World  
Bronze



**[SN]**  
Satin Nickel

## Knobs and Pulls



With our distinctive collection of knobs and pulls, you can create a perfectly matched bath. Our decorative hardware is designed to match many of our popular collections and will give your customers a variety of fashionable options. Available in a selection of styles and finishes.





90° Knobs and Pulls



Bamboo® Knobs and Pulls



Icon™ Knobs and Pulls



Iso™ Knobs and Pulls



Kingsley® Knobs and Pulls



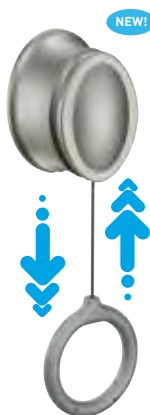
Rothbury™ Knobs and Pulls



Waterhill® Knobs and Pulls



## Retractable Towel Ring



Let your hand towel come to you – and put itself away automatically. Our innovative towel ring expands out up to 11" and effortlessly retracts back to its original position, keeping hand towels off the floor or counter and easily within reach. Great for everyone – especially children! It's the perfect way to keep a bath, kitchen or utility area neat and organized.

- Eliminates towels being left on the counter or floor
- Keeps the bath neat and organized
- Holds hand and kitchen towels
- Use in multiple settings like: bath rooms, kitchens, utility rooms and garages
- Great for everyone, especially children
- Easy to install and use
- Hardware included



### Finishes Available



**(BN)**  
Brushed Nickel



**(CH)**  
Chrome



**(ORB)**  
Oil Rubbed Bronze



# Shower Caddies

NEW!

## Adjustable Shower Caddy

DN1481

- Designed to fit on the shower arm
- Includes multiple adjustable trays to hold shampoos, conditioners, etc.
- Tray holes allow bottles to be stored upside down for easy dispensing
- Horizontal and vertical adjustability to accommodate various sized bottles
- Separate soap dish tray and an area to hold razors, brushes, etc.
- Suction cup included for added stability
- Corrosion-resistant stainless steel and ABS plastic
- Limited Lifetime Warranty



NEW!

## Shower Caddy

DN1402W

- Designed to fit on the shower arm
- Ample storage capacity to hold shampoos, conditioners, etc.
- Corrosion-resistant ABS plastic
- Limited Lifetime Warranty

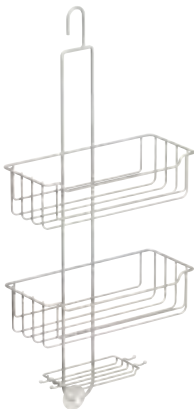


NEW!

## Stainless Steel Shower Caddy

DN1451SS

- Designed to fit on the shower arm
- Ample storage capacity to hold shampoos, conditioners, etc.
- Separate soap dish with area to hold razors, brushes, loofahs, etc.
- Suction cup included for added stability
- Corrosion-resistant stainless steel
- Limited Lifetime Warranty



## Towel Bar Hooks



Easy to install towel bar hooks are a quick way to organize your bathroom

- Maximizes space
- Quick, easy install
- Comes in a set of two hooks per package
- Fits most 0.5-in., 0.625-in., and 0.75-in. diameter towel bars

### Finishes Available



**Brushed Nickel**



**Chrome**



**Old World Bronze**

## Decorative Hooks

Decorative hooks match many bath accessory collections for endless decorating possibilities. Available in five finishes, including Brushed Nickel, Chrome, a combination of Chrome and Polished Brass, Old World Bronze and White.

Size of each: 10-in. W x 2-in. D x 1.75-in. H



7603BN

Decorative Brushed Nickel Triple Robe Hook

## Curved Shower Rods, Hooks and Rings



Are you ready for a more comfortable experience in your shower? Moen® Inspirations® Curved Shower Rods allow you to maximize your space by providing extra elbow room in the shower. They also add an elegant and luxurious look to any bath and are available in three of today's popular finishes: Brushed Nickel, Chrome and Old World Bronze. Rings, tension rods and shower hooks round out the suite of shower rods and accessories.

### Finishes Available



**Brushed Nickel**



**Chrome**



**Old World Bronze**

Finishes created to match accessories; most styles are available in Brushed Nickel, Chrome and Old World Bronze. Shower curtain rings not included with shower curtain rods.

## Fixed-Length Curved Shower Rods with Pivoting Flanges



- Pivoting flanges provide an easy, secure installation on inconsistent or uneven wall surfaces
- Available in 5-ft. and 6-ft. lengths, provides extra elbow room in the shower:
  - 5-ft. rod = 6-in. extra space
  - 6-ft. rod = 7.5-in. extra space
- Decorative covers snap on easily to conceal pivoting flanges and hide holes from previous shower rods
- Stainless steel construction
- Works with standard shower curtains
- Finishes created to match accessories: Brushed Nickel, Chrome and Old World Bronze

Flanges Pivot 180 Degrees

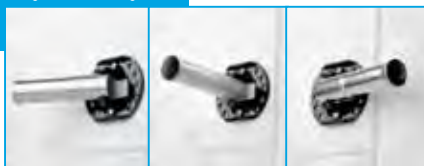


## Adjustable-Length Curved Shower Rods with Pivoting Flanges



- Adjusts to fit shower enclosures between 54-in. and 72-in.; no cutting required
- Superior strength—weight load capacity of more than 120 lb. (based on independent lab testing)
- Pivoting flanges provide an easy, secure installation on inconsistent or uneven wall surfaces
- Provides up to 7.5-in. of additional elbow room
- Decorative covers snap on easily to conceal pivoting flanges and hide holes from previous shower rods
- Stainless steel construction
- Works with standard shower curtains
- Finishes created to match accessories: Brushed Nickel, Chrome and Old World Bronze

Flanges Pivot 180 Degrees



## Double Curved Shower Rod



In smaller rooms, such as the bathroom, space and storage are key concerns. Luckily, you can create up to 5.5-in. of additional elbow room in the shower room – while providing visual appeal and adding extra hanging space – with the Double Curved Shower Rod.

- Provides up to 5.5-in. more elbow room in the shower
- Features decorative covers
- Keeps towels easily accessible
- Separates the curtain and liner
- Adjusts from 57-in. to 60-in.
- Works with standard 72-in. x 72-in. shower curtains
- Finishes created to match accessories: Brushed Nickel, Chrome and Old World Bronze



## Fixed-Length Curved Shower Rods with Non-Pivoting Flanges



Quickly and easily add 6-in. of additional elbow room to the shower without having to remodel. Fixed-Length Curved Shower Rods are available in three of today's most popular finishes with decorative or low-profile flange covers.

- Provides 6-in. of additional showering space
- 100% stainless steel construction (rod, flanges and covers)
- Mounting posts feature multiple holes that allow for a secure installation
- 3-in. round flange covers conceal holes from previous shower rods
- Works with standard shower curtains
- Finishes created to match accessories: Brushed Nickel, Chrome and Old World Bronze

## Tension Rods

with  
**FASTLOCK™**  
technology



No tools, no additional hardware, no long installation. In fact, our tension rods, with FastLock™ technology, can be up in a matter of minutes. Installs in two easy steps:



**Step 1:** Expand.



**Step 2:** Twist and lock.

- Rod expands from 44-in. to 72-in.
- Stainless Steel Construction
- Corrosion-Resistant
- Quick, easy installation
- FastLock™ technology eliminates “wall walking”
- 100% hardware free
- Finishes created to match accessories: Brushed Nickel, Chrome and Old World Bronze



# Double Shower Curtain Rings, Roller Rings and Rod Hooks



## Double Shower Curtain Rings

These double shower curtain rings stand out for their style and functionality. Their unique offset design separates the decorative shower curtain from the liner allowing the latter to be hidden from view. Available in three finishes, these rings are corrosion-resistant and fit all shower curtain and rod types.



- Smooth-rolling ball bearings eliminate snagging, tugging and pulling
- Corrosion-resistant
- Includes 12 rings
- Finishes created to match accessories: Brushed Nickel, Chrome and Old World Bronze

## Shower Curtain Rings

Enhance your bathroom décor with these smooth-rolling Shower Curtain Roller Rings. Ball bearings glide smoothly across the curtain rod.

- Smooth-rolling ball bearings
- Eliminates snagging, tugging and pulling
- Corrosion-resistant
- Fits any shower curtain and rod type
- Includes 12 rings
- Finishes created to match accessories: Brushed Nickel, Chrome and Old World Bronze



## Shower Rod Hook

Innovative shower rod hooks allow you to hang items for easy access in the shower. They work on all types of 1-in. diameter bars, straight or curved, and are extremely easy to install.



- Lets you hang items for easy access in the shower
- Works with straight and curved shower rods
- Finishes created to match accessories: Brushed Nickel, Chrome and Old World Bronze

## Mirrorscapes® Mirror Frames

After Mirrorscapes®



Before Mirrorscapes®

From classic elegance to modern sophistication, these distinctive and fine-crafted frames can turn a once-overlooked element into the very focal point of your room. And although Mirrorscapes® are simple to install, they have a tremendous impact — not only bringing style to the mirror, but bringing an entire room together.

Mirrorscapes® frames are available in a variety of designs and finishes that allow you to create a beautifully coordinated look while expressing your unique personal style.



Now you can give your mirror the beauty of a handcrafted frame without the expense of custom carpentry. The unique frame assembly system of Mirrorscapes® is designed to make installation as simple as possible, even eliminating the painstaking task of making angled miter cuts.

#### 1000 Series

Beautifully crafted details true to authentic woodworking bring a natural style and sophistication to the entire room.



#### 2000 Series

Smooth lines surround your mirror with style and simplicity for a refined look that's purely beautiful.

#### 3000 Series

Finely detailed and reminiscent of classical architecture, this style is certain to bring a distinct richness to any décor.



#### 4000 Series

The perfect interplay of strong lines and rounded details, this frame possesses a modern, clean quality that's always in fashion.

#### 5000 Series

Classical elegance meets timeless style, creating the perfect complement to countless design schemes.



**m**irrorscapes®

MIRROR FRAMES

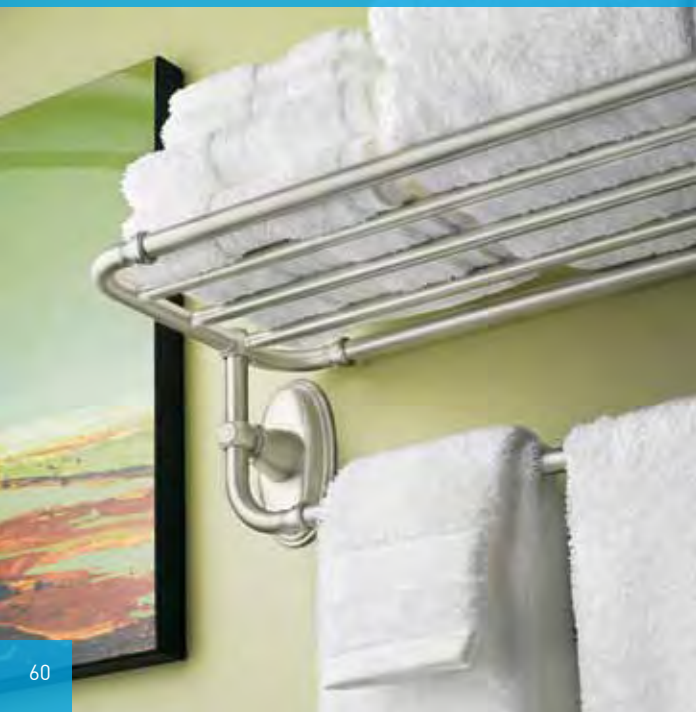
## Decorative Tank Levers



Beautifully designed, our decorative tank levers install in minutes without the need for special tools or draining the tank. The arm is adjustable and fits most front, side, and angle-mount style tanks.

Available in a variety of styles and finishes, you can choose the decorative tank lever that best matches your bath décor.

## Hotel Shelves



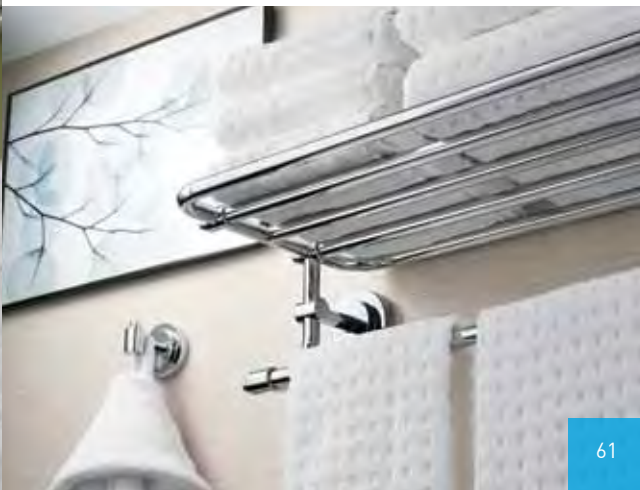
## Pivoting Paper Holders



Now there's no excuse to leave the bath tissue roll empty!

The innovative, spring-free design makes changing the roll quick and easy. Simply lift the arm, insert new roll and set the arm back into place. The pivoting arm remains attached so there's no spring to lose, no extra parts to drop.

Eva®, Kingsley® and Iso™ Decorative Hotel Shelves help create the luxurious, coordinated styling of an upscale hotel in your own home. Decorative Hotel Shelves answer the demand for perfectly matched accessories and faucets.



## Accessories Finish Guide

### A Variety of Finishes to Match and Coordinate with Moen® Faucets



**[AZ]**  
Antique Bronze



**[BB]**  
Brushed Bronze



**[AN]**  
Antique Nickel



**[BK]**  
Black



**[BC]**  
Brushed Chrome



**[BN]**  
Brushed Nickel



**[BRB]**  
Mediterranean  
Bronze



**[CH]**  
Chrome



**[CP]**  
Chrome & Polished Brass



**[MPW]**  
Matte Pewter



**[NL]**  
Polished Nickel



**[ORB]**  
Oil Rubbed Bronze



**[OWB]**  
Old World Bronze



**[PB]**  
Polished Brass



**[PW]**  
Pewter



**[SN]**  
Satin Nickel



**[W]**  
White



**[WR]**  
Wrought Iron

CUSTOMER SERVICE  
USA : 1.800.882.0116 / FAX: 1.888.379.2720

INTERNATIONAL: 1.440.962.2263  
INTERNATIONAL FAX: 1.440.962.2726

CANADA: 1.800.465.6130

MEXICO: 1.800.718.4345  
Moen De Mexico • SA de C.V. • Ramos Arizpe, Coahuila, Mexico



CORPORATE HEADQUARTERS  
25300 Al Moen Dr. • North Olmsted, OH 44070  
1.800.321.8809 • Fax: 1.800.848.6636  
International: 1.440.962.2000  
International Fax: 1.440.962.2726

Possession of this catalog by any person is not an offer to sell them or anyone else the product listed. Prices and specifications are subject to change without notice. This catalog supersedes all previous Moen catalogs. Although descriptions are believed to be correct at publication approval, accuracy cannot be guaranteed. Moen reserves the right to make changes from time to time, without notice or obligation, and to change or discontinue models. Inspirations, Creative Specialties International, "Buy it for looks. Buy it for life." and The Moen Waterdrop logo are registered trademarks of Moen Incorporated. Bamboo, Cabrina, Fina, Danbury, Eva, Felicity, Gilcrest, Glenshire, Inspirations, Kingsley, Mason, Mirrorscapes, Moen, Retreat, Sage, Sienna, Stockton, Vestige, Waterhill, Wembley and Weymouth are registered trademarks of Moen Incorporated. 90°, Brantford, Icon, Iso, Lounge, Method, Pro+Fit, Reed, Rothbury and Viq are trademarks of Moen Incorporated. Printed in USA. ©2012.



Best In Class Customer Service at 1-800-BUY-MOEN  
Our highly trained customer and consumer service experts are available six days a week with extended hours to handle all questions and concerns.



Buy it for looks. Buy it for life.®

© Creative Specialties International.  
© Moen Incorporated 2012

Visit our website at [www.moen.com](http://www.moen.com)  
[www.twitter.com/moen](http://www.twitter.com/moen)  
[www.facebook.com/moen](http://www.facebook.com/moen)